

AS Standards

	Commercial 95 340	Commercial 95 340 FR
Performance		
Maximum force	warp 670 N/50mm	580 N/50mm
Elongation at max. force	warp 117%	98%
Maximum force	weft 2400 N/50mm	2000 N/50mm
Elongation at max. force	weft 83%	71.5%
Breaking force	warp 990 N	930 N
Breaking force	weft 2000 N	2000 N
Tear strength	warp 184 N	194 N
Tear strength	weft 347 N	282 N
Bursting pressure	3500 kPa	3600 kPa
Bursting force	1937 N	1944 N
Fabric Properties		
Nominal Fabric Mass	340 gsm ± 20	340 gsm ± 20
Roll Specification		
Width	3m (folded)	3m (folded)
Length	40m	40m
Flammability Info		
Flammability Index - 12	Flammability Index - 12	Flammability Index - 1
Ingnitability Index - 10	Ingnitability Index - 10	Ingnitability Index - 13
Spread of Flame Index - 7	Spread of Flame Index - 7	Spread of Flame Index - 8
Heat Evolved Index - 5	Heat Evolved Index - 5	Heat Evolved Index - 3
Smoke Developed Index - 4	Smoke Developed Index - 4	Smoke Developed Index - 6

ASTM Standards

	Commercial 95 340	Commercial 95 340 FR
Performance		
Maximum force	warp 189.1 lbf	158.6 lbf
Elongation at max. force	warp 103.67%	88.7%
Maximum force	weft 462.3 lbf	412.3 lbf
Elongation at max. force	weft 63%	49%
Breaking force	warp 52.2 lbf	43 lbf
Breaking force	weft 52.2 lbf	39.6 lbf
Tear strength	422 lbf	408 lbf
Fabric Properties		
Nominal Fabric Mass	340 gsm ± 20	340 gsm ± 20
Roll Specification		
Width	9 ft. 10 in. (folded)	9 ft. 10 in. (folded)
Length	131 ft. 3 in.	131 ft. 3 in.
Flammability Info		
ASTM E84 19B Class A	ASTM E84 19B Class A	CSFM Title 19 1237.1 NFPA 701 Test Methods 1&2 ASTM E84 19B Class A



Commercial NinetyFive

340 GSM | Standard & Flame Retardant

The most trusted HDPE shade fabric in the industry.



Data provided in this brochure represents typical averages from independent testing and quality assurance testing and should not be taken as a minimum specification nor as forming any contract between GALE Pacific and another party. Due to continuous product improvement, refer to the GALE Pacific Commercial Fabrics website for the latest technical performance information.

Please note, due to limitations of the printing process, colors pictured may not represent the true color.



<p>GALE Pacific ANZ 145 Woodlands Drive, Braeside, Victoria 3195 Australia Toll Free: +1 800 331 521 au.cs@galepacific.com</p>	<p>GALE Pacific AMERICAS 5311 77 Center Drive, Suite 150, Charlotte, NC 28217 USA Toll Free: +1 800 560 4667 cscommercial@galepacific.com</p>	<p>GALE Pacific MIDDLE EAST JAFZA 15, 6th Floor, Room 604, Jebel Ali Free Zone, Dubai United Arab Emirates +971 4 881 7114 cscommercial@galepacific.com</p>	<p>GALE Pacific ASIA 777 Hengshan W Road, Beilun, Ningbo, Zhejiang 315800 China Toll Free: +1 800 331 521 au.cs@galepacific.com</p>	<p>GALE Pacific EUROPE Toll Free: +1 800 560 4667 csccommercial@galepacific.com</p>
---	--	--	--	--

galecommercial.com

Architectural SHADE FABRIC

Tension Structures
Awnings
Shade Sails
Car Park Structures

Commercial NinetyFive

340 GSM | Standard & Flame Retardant

The cornerstone of the GALE Pacific portfolio, Commercial NinetyFive brings over 25 years of versatility, reliability, and unmatched UV protection.

Free from lead and phthalates, Commercial NinetyFive is the first architectural shade fabric granted Oeko-Tex® 100 and Greenguard® certifications.



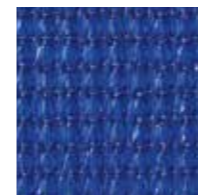
White
497736
495732



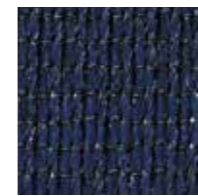
Natural
445003
495541



Desert Sand
444983
495565



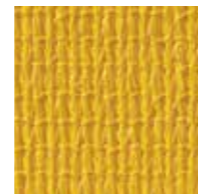
Aquatic Blue
444938
495671



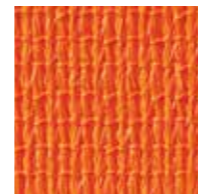
Navy Blue
445010
495602



Driftwood
502294
502348



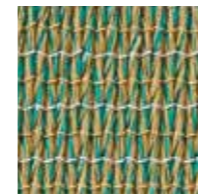
Yellow
445072
495619



Orange
459215
495633



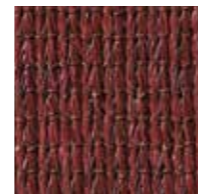
Brunswick Green
444952
495572



Rivergum
445027
495589



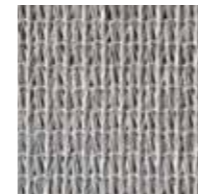
Cherry Red
444976
495695



Deep Ochre
444990
495688



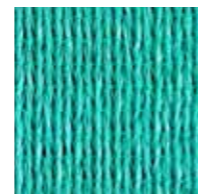
Bright Green
459208
495596



Stone
502300
502355



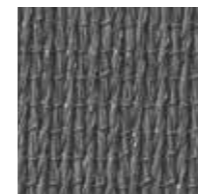
Bluebird
502263
502317



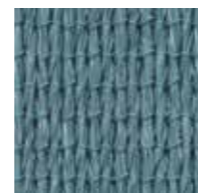
Aquamarine
502287
502331



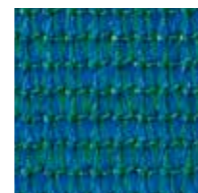
Steel Grey
445041
495718



Gun Metal
455262
495527



Sky Blue
445034
495626



Turquoise
445065
495664



Charcoal
444969
495558



Black
444945
495640

Expansive color assortment

Offering the most expansive color assortment of HDPE shade fabrics, Commercial NinetyFive ensures design accuracy with its precision-driven stentering process.

Effortless installation

Designed for longevity and ease, these maintenance-free shades have a best-in-class lay flat process for effortless installation.

Industry-leading UVR block

Each shade offers an industry-leading 96% UVR block with full warranties against UV degradation.

All colors meet the most tested regional flame retardancy standards, including CSFM & NFPA 701 (Methods 1 & 2), which ensures our fabrics can be used globally.



Commercial 95[®] is a high-quality knitted shade fabric designed for tension structures, awnings and shade covers specifically for commercial architectural applications; supplied in bulk rolls.

- Trusted name in Commercial knitted fabric with over 25 years of market usage in the world's harshest conditions
- Manufactured with 100% virgin grade polymers ensuring fabric consistency and performance
- Strong HDPE results in a fabric that is recyclable and won't rot or absorb moisture.
- Stentered (heat-set) to reduce shrinkage once installed and for ease of fabrication.
- Full 15-year UV degradation warranty on fabric.
- 100% Lead, Phthalate and PFAS free
- Greenguard[®] and Oeko-Tex[®] certified

FABRIC PROPERTIES

(AS 2001.2.13) mass per unit
Nominal fabric mass 10 oz / yd² , 340 gsm ± 20
Approximate thickness 0.6 in. / 1.6 mm

ROLL SPECIFICATIONS

Nominal width: 9 ft. 10in. / 3.0m (folded)
Length: 131 ft. 3 in. / 40m
Approx. roll weight: 97 lbs. / 44 kg
Approx. roll diameter: 1.05 ft / 0.32 m
Core diameter: 1.38 in. / 35 mm

USAGE INSTRUCTIONS

Do not use against flames.
Contact with organic solvents, halogens or highly acidic substances may reduce the service life of the fabric and void the warranty.
Biaxial elastic material properties available on request.

SUGGESTED SPECIFICATION

Shade cloth fabric shall be compliant to Australian standard AS 4174:2018 and shall be GALE Pacific Commercial 95 Knitted HDPE monofilament & tape shade fabric offering a UVE Protection Category of up to "Most Effective".

FLAMMABILITY

ASTM E84 19B Class A

PERFORMANCE

ASTM D5034

Tensile Strength and Elongation Maximum
Force – Warp (Mean) 189.1 lbf
Elongation at Maximum Force – Warp (Mean) 103.67 %
Maximum Force – Weft (Mean) 462.3 lbf
Elongation at Maximum Force (Mean) 63%

ASTM D2261

Tearing Strength – Tongue (Single Rip)
Mean Force – Warp 52.2 lbf
Mean Force – Weft 52.2 lbf

ASTM D6797

Bursting Strength – Ball Burst (Constant Rate of Extension)
Mean Force 422 lbf

(AS 4174:2018) Shade Protection Fabric Performance

Colour	Cover Factor	Shade Factor	UV-Vis Trans %	UVR Trans %	UVR Block %	UVE %	Protection Category
Aquamarine	95	89.5	10.5	4.9	95.1	95	Most Effective
Aquatic Blue	92	85.6	14.4	8.9	91.1	91	Very Effective
Black	94	94.6	5.4	5.2	94.8	93	Very Effective
Blue Bird	95	91.2	8.8	4.7	95.3	95	Most Effective
Bright Green	92	88.6	11.4	7.5	92.5	91	Very Effective
Brunswick Green	94	93.8	6.2	5.3	94.7	93	Very Effective
Charcoal	93	93.1	6.9	6.6	93.4	91	Very Effective
Cherry Red	91	78.4	21.6	8.8	91.2	91	Very Effective
Deep Ochre	94	92.8	7.2	5.4	94.6	93	Very Effective
Driftwood	95	90.0	10.0	5.1	94.9	94	Very Effective
Desert Sand	94	86.1	13.9	6.2	93.8	93	Very Effective
Gun Metal	93	91.4	8.6	6.8	93.2	92	Very Effective
Natural	93	76.2	23.8	6.9	93.1	92	Very Effective
Navy Blue	94	93.6	6.4	5.6	94.4	93	Very Effective
Orange	93	80.6	19.4	6.0	94.0	93	Very Effective
Rivergum Green	93	88.7	11.3	7.1	92.9	92	Very Effective
Sky Blue	92	89.0	11.0	7.8	92.2	91	Very Effective
Steel Grey	94	90.9	9.1	5.7	94.3	93	Very Effective
Stone	94	89.3	10.7	5.7	94.3	94	Very Effective
Turquoise	92	86.0	14.0	8.5	91.5	91	Very Effective
White	93	73.9	26.1	7.1	92.9	92	Very Effective
Yellow	95	77.6	22.4	4.5	95.5	94	Very Effective



ADVANCED TEXTILES ASSOCIATION



AMERICAN SOCIETY OF LANDSCAPE ARCHITECTS



12.HUS.15194 HOHENSTEIN HTTI



Endorsed by
Cancer Council
ANZ
MIDDLE EAST
AMERICAS
ASIA
EUROPE

P 1800 331 521
P +971 4 881 7114
P 1800 560 4667
P 1800 331 521
P 1800 560 4667

Available in select territories
www.galecommercial.com

The above results are typical averages from quality assurance testing and are not to be taken as a minimum specification nor as forming any contract between GALE Pacific and another party. Due to continuous product improvement product specifications are subject to alteration without notice. As the use and disposal of this product are beyond GALE Pacific's control, regardless of any assistance provided without charge, GALE Pacific assumes no obligation or liability for the suitability of its products in any specific end use application. It is the customer's responsibility to determine whether GALE Pacific's products are appropriate for the specific application and complies with any legal & patent regulations.